



AUCTION

LEADING THE INDUSTRY SINCE 1945

Realtors • Auctioneers • Advisors

Online Only

3 Brick Duplexes – Canton, OH

STARTS: FRIDAY – MARCH 25, 2022 – 1:00 PM

ENDS: TUESDAY – MARCH 29, 2022 – 1:00 PM

Absolute auction, all sells to the highest bidders ONLINE ONLY. LOCATION:

AUCTION #1 - 1704-1706 DOWNING CT. NE, CANTON, OH 44714

Stark County parcel #244893. Brick ranch duplex with 2-car attached garage. Each unit has 2 bedrooms, full bath, and garage. Separate utilities. Tenants pay gas and electric. Rents are \$445 and \$485 per month. Tenants are current and desire to stay. Current taxes are \$803 per year. 118' x 40' lot. Located on the corner of 17th and Downing St.



STARTS: FRIDAY – MARCH 25, 2022 – 1:00 PM
ENDS: WEDNESDAY – MARCH 30, 2022 – 1:00 PM

Absolute auction, all sells to the highest bidders ONLINE ONLY. LOCATION:

**AUCTION #2 – 1421 VERMONT PL. NE & 1933 ELMO ST. NE,
CANTON, OH 44714**

Stark County parcel #227377. Brick ranch up-and-down duplex on corner lot with 2-car detached garage. Each unit has 2 bedrooms and full bath. Separate utilities. Tenants pay gas and electric. Rents are \$425 and \$450 per month. Tenants are current and desire to stay. Current taxes are \$1,312 per year. 110' x 39' corner lot. Located on the corner of Vermont Pl. and Elmo St.



Information is believed to be accurate but not guaranteed. KIKO Auctioneers

800-533-5456 | kikoauctions.com



STARTS: FRIDAY – MARCH 25, 2022 – 1:00 PM
ENDS: THURSDAY – MARCH 31, 2022 – 1:00 PM

Absolute auction, all sells to the highest bidders ONLINE ONLY. LOCATION:

AUCTION #3 – 3017-3019 DALTON PL. SW, CANTON, OH 44710

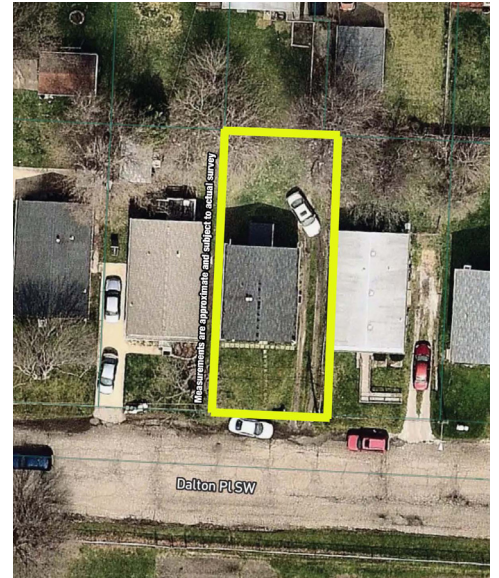
Stark County parcel #227380. Brick and aluminum raised ranch duplex. Each unit has 2 bedrooms and full bath. Separate utilities. Tenants pay gas and electric. Rents are \$350 and \$400 per month. Tenants are current and desire to stay. Current taxes are \$978 per year. 40' x 101' lot.



AUCTION #1

AUCTION #2

AUCTION #3



NOTE: View interior of units online at www.kikoauctions.com. Units will not be open for viewing. Call Theresa Blocher, 330-495-3789 for further details.

TERMS ON REAL ESTATE: 20% down auction day, balance due at closing. A 10% buyer's premium will be added to the highest bid to establish the purchase price. Any desired inspections must be made prior to bidding. All information contained herein was derived from sources believed to be correct. Information is believed to be accurate but not guaranteed.

AUCTION BY ORDER OF: Jack & Judy Goodnite



Auctioneer/Realtor®
THERESA BLOCHER
330-495-3789
blocher@kikocompany.com

800-533-5456 | kikoauctions.com

